

Itesso – IDPMS customer release notes IDPMS 3.16.5

Change log

Version	Author	Description	Date
1.0	DVH	Initial version	01-11-2015
1.1	DVH	First review	15-11-2015
1.2	EW	Review	24-11-2015
1.3	DVH	Added CCV direct sales	30-12-2015

Contents

Overview	3
General	4
CSV export option for reports	4
Overbooking warnings	4
XMLPOS mapping.....	5
Invoice module	7
Rate management	8
Rate verification.....	8
Channel manager	9
Rate Grid	10
Relation profiles	11
VIP Category	11
Default values in the company profile.....	11
Default mealplan value travel agent	12
Reservation	12
Memo fields.....	12
ID scanner	13
CCV Interface	14
Direct sale	14
Other changes and enhancements	14

Overview

Contrary to the previous IDPMS release, version 3.16.5 contains many fixes and new features. This document highlights the major changes and enhancements in this IDPMS version. A detailed document on all (technical) changes and fixes can be requested via our support team.

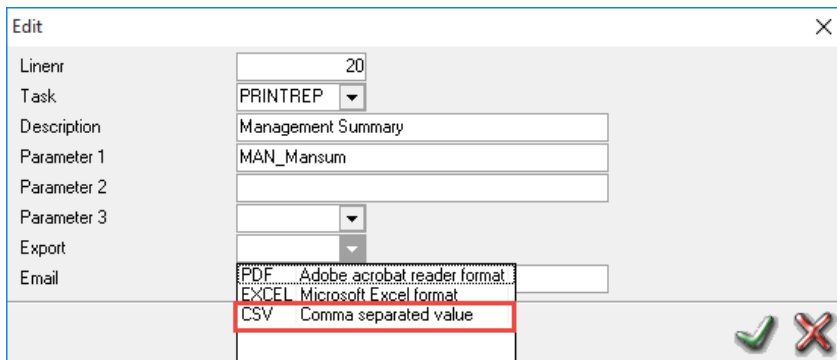
IDPMS version 3.16.5 is the first version that can be deployed through the On Premise Auto Update module that was introduced in version 3.16.4. For hotels currently on v3.16.4, the deployment will be announced via the IDPMS e-mail module for selected users about a week before the update is officially released. The time between announcement and update deployment may vary per hotel as the deployment is done in smaller batches of hotels. If you are not running IDPMS v3.16.4 as your current version, support will contact your hotel to plan the update.

Multi property environments and hotels that have not set the On Premise Update to FULL INSTALL are not updated automatically and will also be contacted by our support team to plan the update.

General

CSV export option for reports

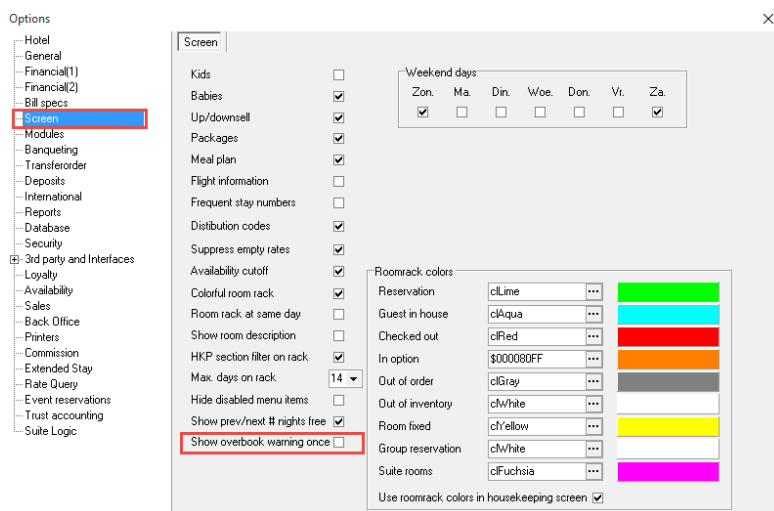
A new export format has been added for exporting reports during the night audit procedure. CSV (Comma Separate Value) is especially useful for “flat” report exports. It works best for reports that do not have headers or footers. It is advised that this option be used in combination with custom built reports designed to be exported in CSV format.



! The CSV option cannot be used in combination with the module to set default report parameters.

Overbooking warnings

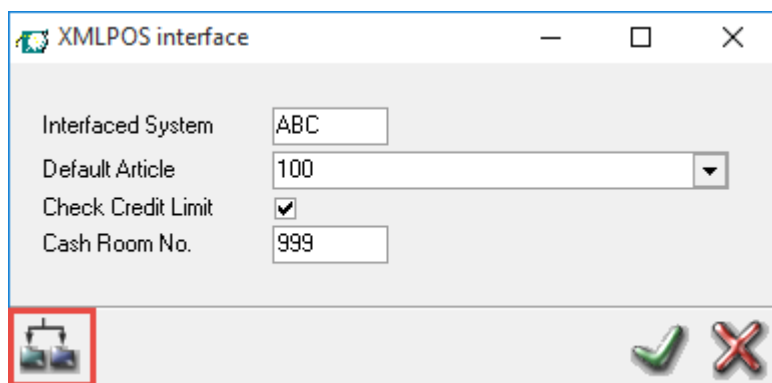
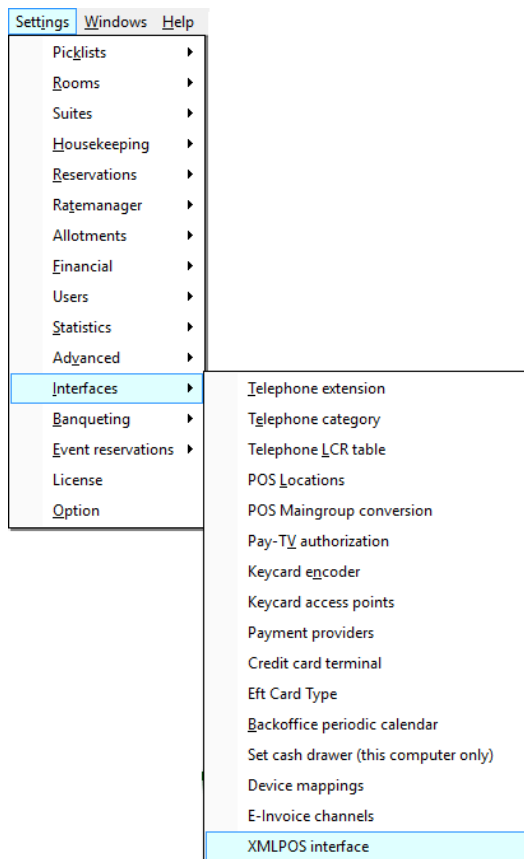
A new setting has been added to reduce the number of overbooking warnings when creating a reservation. Overbookings warnings are now displayed only once when this setting is active.



XMLPOS mapping

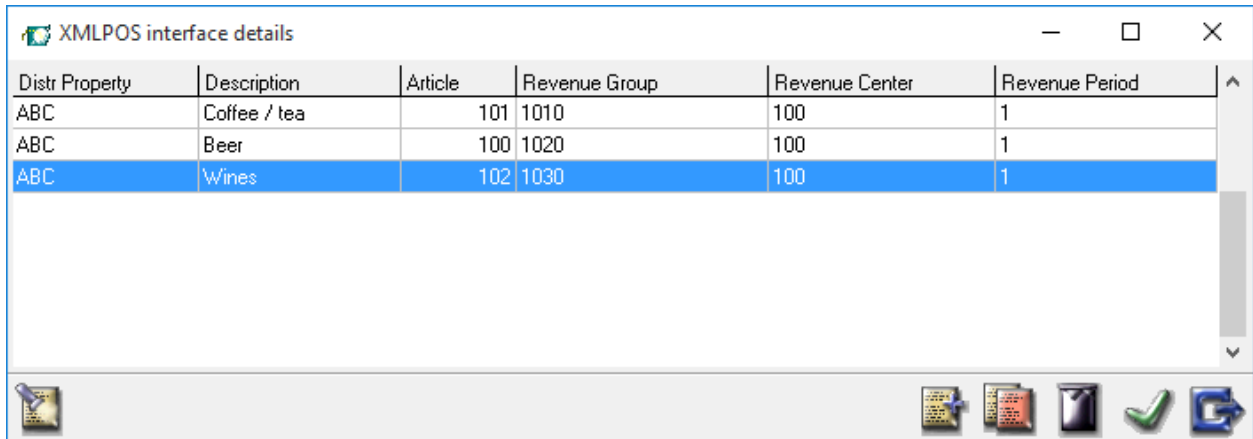
Hotels using the IDPMS- XMLPOS interface between IDPMS and their POS system are now able to modify or add interface mappings. The mapping table connects the incoming codes for revenue centers, revenue codes and meal periods from the POS system to IDPMS articles.

The mapping option can be found in Settings/Interfaces/XMLPOS Interface.

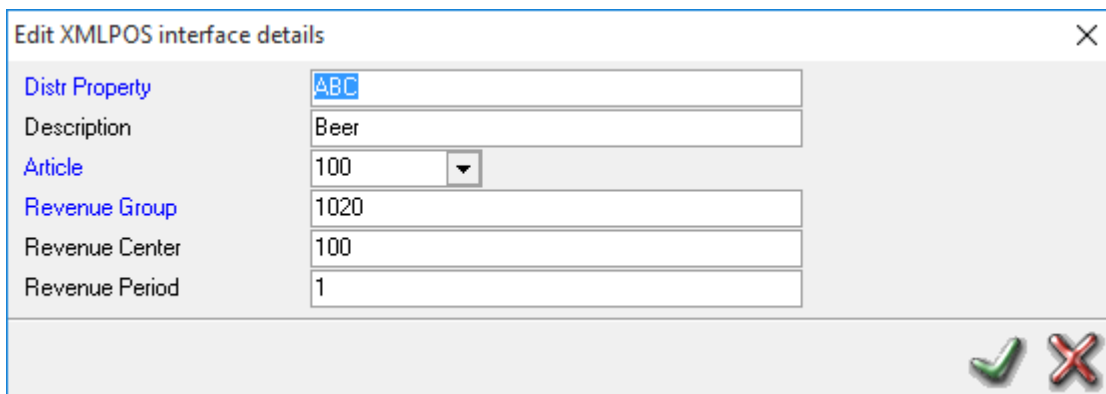


- Interfaced System: Hotel property code
- Default article will be used when incoming postings from the POS cannot find a match in the mapping table.

- Check credit limit will check the credit limit on the folio and will not allow POS postings if the credit will be exceeded.
- Cash Room No. The Paymaster room number that is used for the EOD of Cash Postings.



Distr Property	Description	Article	Revenue Group	Revenue Center	Revenue Period
ABC	Coffee / tea	101	1010	100	1
ABC	Beer	100	1020	100	1
ABC	Wines	102	1030	100	1



Distr Property	ABC
Description	Beer
Article	100
Revenue Group	1020
Revenue Center	100
Revenue Period	1

Clicking the split icon will open the mappings and allows adding or changing the values.

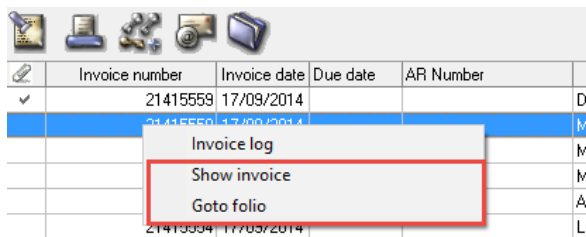
- Distr. Property: Hotel Property code
- Description: The description for this mapping entry (not used to post in IDPMS)
- Article: The IDPMS article to which postings from the POS are mapped.
- Revenue Group: Incoming revenue group from the POS system
- Revenue Center: Optional to specify multiple Revenue centers or outlets. Postings from Bar or restaurant can be mapped to different IDPMS articles provided the POS system sends the Revenue Centers
- Revenue Period: To specify the meal periods like Breakfast, Lunch or Dinner. Provided the POS system sends Revenue Periods.

! If changes are needed and you are not comfortable how to change or add mappings, contact the Itesso support team.

Invoice module

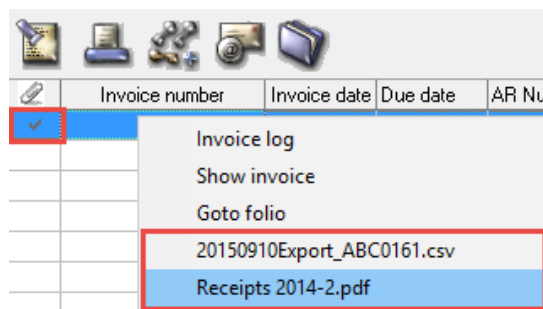
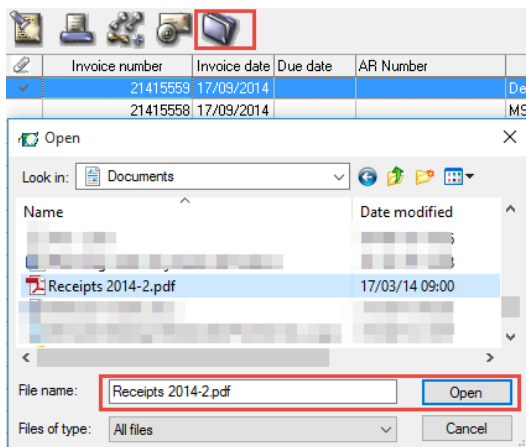
The invoice module has been enhanced.

- 1) Right clicking an invoice from the invoice module now has 2 extra options.
 - Show invoice
 - Go to Folio



- 2) Another new feature is the option to add/attach files to an invoice. For example, scanned POS receipts.

Clicking the folder on the selected invoice allows to attach a file. Once one or more files are attached, the small check mark icon indicates attachments linked to this invoice. When right clicking the invoice a list of attachments is displayed and attachments can be viewed.



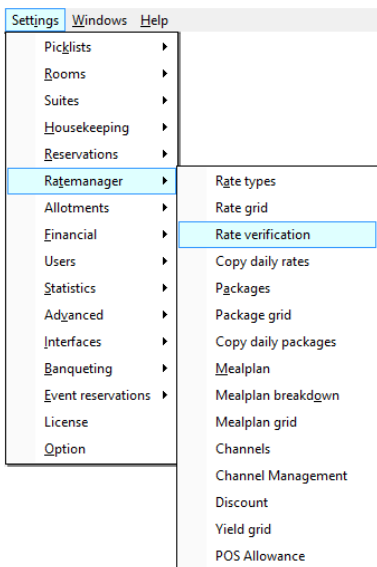
A future release of the interface with the Anachron Digital invoicing portal will support sending the attachments in addition to the pdf invoice. The release of this updated version of the interface is expected in Q1 of 2016.

Rate management

Rate verification


A new Rate verification screen has been added. It can be found in the Setting/Ratemanager menu. This screen displays the actual configuration of the selected rate/room type combination for the selected verification period. Although the screen resembles the Rate Query screen the outcome is the actual rate grid values and not the available rates based on stay conditions like on the Rate Query screen.

Go to Settings/Ratemanager/Rate verification.



The following screen opens.

DATE	RATE TYPE	SUB RATE TYPE	ROOM TYPE	RATE	RTS	RS	MINLOS	MAXLOS	LOS	MAXOCC%	CUTOFF	CTA	CTD	O/C
17/09/2014	RACK		BUS	149.00	0	0	0	0	0	0.00	0			
17/09/2014	RACK		COMF	99.00	0	0	0	0	0	0.00	0			
17/09/2014	RACK		COMF+	109.00	0	0	0	0	0	0.00	0			
17/09/2014	RACK		DRIE	119.00	0	0	0	0	0	0.00	0			
17/09/2014	RACK		FAM	149.00	0	0	0	0	0	0.00	0			
17/09/2014	RACK		INV	119.00	0	0	0	0	0	0.00	0			
17/09/2014	RACK		JRSUITE	175.00	0	0	0	0	0	0.00	0			
17/09/2014	RACK		PENTHOUS	225.00	0	0	0	0	0	0.00	0			
17/09/2014	RACK		SUP	129.00	0	0	0	0	0	0.00	0			
17/09/2014	RACK		VIER	129.00	0	0	0	0	0	0.00	0			
17/09/2014	RACK		WELNESS	199.00	0	0	0	0	0	0.00	0			
18/09/2014	RACK		BUS	149.00	0	0	0	0	0	0.00	0			
18/09/2014	RACK		COMF	99.00	0	2	3	0	0	0.00	0			
18/09/2014	RACK		COMF+	109.00	0	0	0	0	0	0.00	0			
18/09/2014	RACK		DRIE	119.00	0	0	0	0	0	0.00	0			
18/09/2014	RACK		FAM	149.00	0	0	0	0	0	0.00	0			
18/09/2014	RACK		INV	119.00	0	0	0	0	0	0.00	0			
18/09/2014	RACK		JRSUITE	175.00	0	0	0	0	0	0.00	0			
18/09/2014	RACK		PENTHOUS	225.00	0	0	0	0	0	0.00	0			
18/09/2014	RACK		SUP	146.50	0	0	0	0	0	0.00	0			
18/09/2014	RACK		VIER	129.00	0	0	0	0	0	0.00	0			

Select a verification date range and specify number of nights for which you would like to see the data, as well as the number of adults and the rate type * – room type combination and click the query button at the top right corner. 

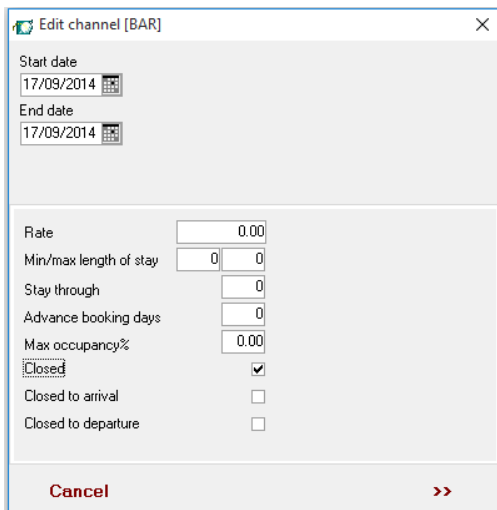
The configured rates and restrictions are displayed for easy checking.

*The rate type selection is limited to a maximum of 5 rate types at a time.

When a grouped rate is selected the grouped rate plus the available sub rate are displayed.

Channel manager

The channel manager has been enhanced now has an additional option to filter by day of the week for applying the changes to a channel. Same screen order and logic is followed as in the rate grid.



Edit channel [BAR]

Start date: 17/09/2014

End date: 17/09/2014

Rate: 0.00

Min/max length of stay: 0 / 0

Stay through: 0

Advance booking days: 0

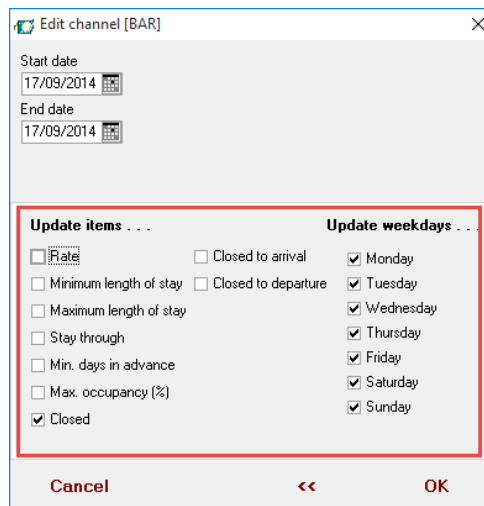
Max occupancy%: 0.00

Closed

Closed to arrival

Closed to departure

Cancel >>



Edit channel [BAR]

Start date: 17/09/2014

End date: 17/09/2014

Update items . . .

Rate

Minimum length of stay

Maximum length of stay

Stay through

Min. days in advance

Max. occupancy (%)

Closed

Closed to arrival

Closed to departure

Update weekdays . . .

Monday

Tuesday

Wednesday

Thursday

Friday

Saturday

Sunday

Cancel << OK

Rate Grid

The rate grid now shows the actual values in case of grouped and derived rates. In previous IDPMS version the rate value fields were not displaying any values for grouped or derived rates.

Rates are directly calculated based on the actual valid rate at that moment and the originating rate type is displayed as well for easy reference.

Edit values ✕

Start date: 17/09/2014

End date: 17/09/2014

Rate types

BAR	Bar
BAR1	Best Available Rate
BAR2	Best Available Rate
BAR3	Best Available Rate
BAR4	Best Available Rate
RACK	Rack rate
HAND	Handmatige prijs adc

Room types

SUP	Superior kam
INV	Invalide kamer
DRIE	Driepersoonsl
VIER	Vierpersoonsl
FAM	Family room
BUS	Business kam
JRSUITE	Junior Suite

Base rate	91.50	<input type="checkbox"/> Special discount										Rooms to sell	0	12
	1	2	3	4	5	6					Minimum LDS	0	0	
Adults	0.00	0.00	27.50	0.00	0.00	0.00	BAR is a rate type group (Current = BAR2)				Minimum Stay Thru	0		
Extra child	25.00	0.00	Actual rate is defined by the underlying rate types									Advance booking days	0	
Extra baby	0.00	0.00										Max House occ %	0.00	

Closed

Closed to arrivals

Closed to departures

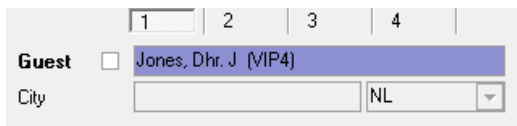
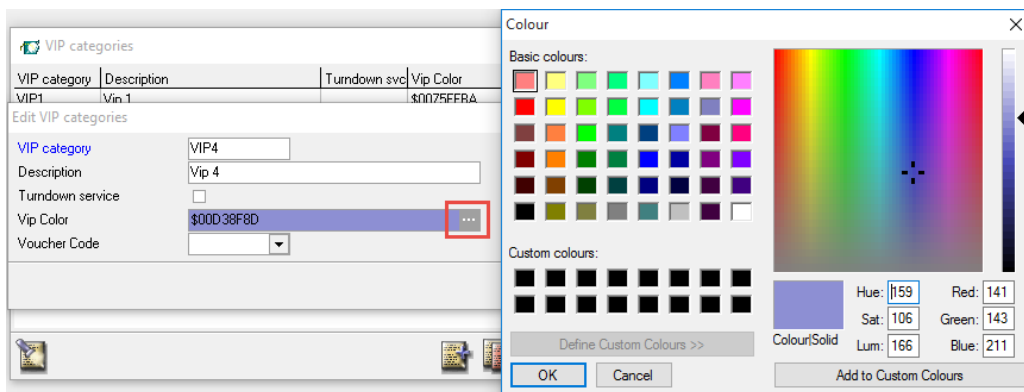
Cancel
>>

Relation profiles

VIP Category

It is now possible to define a background color for each VIP Category. Until now each VIP Category was using a yellow background for the guest name field in the reservation, but as of this version the color may differ.

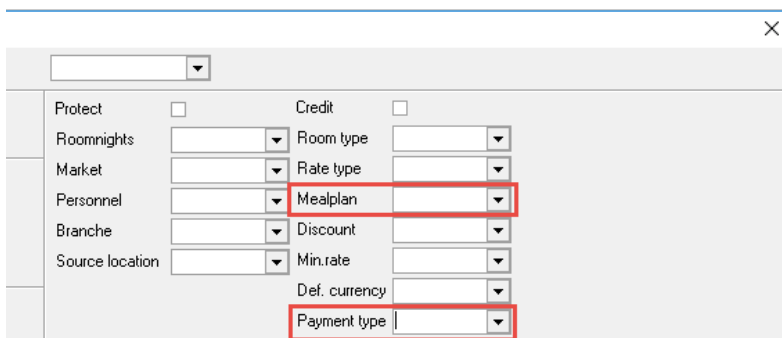
Select the dotted icon to display the color selection screen to define a color for each VIP Category. The reservation screen will display the selected color for the used VIP Category as background in the guest name field.



Default values in the company profile

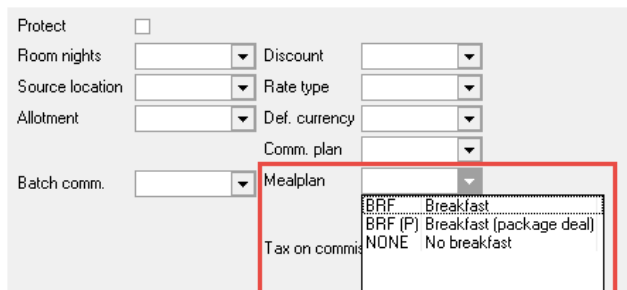
In the company profile it is now possible to add a default values for Mealplan and Payment type. When creating a new reservation these values are taken over in the reservation screen.

The default payment type is populated in the Payment type field in the reservation screen.



Default mealplan value travel agent

In travel agent profile it is now possible to add a default values for mealplan. When creating a new reservation this mealplan value is taken over in the reservation screen.



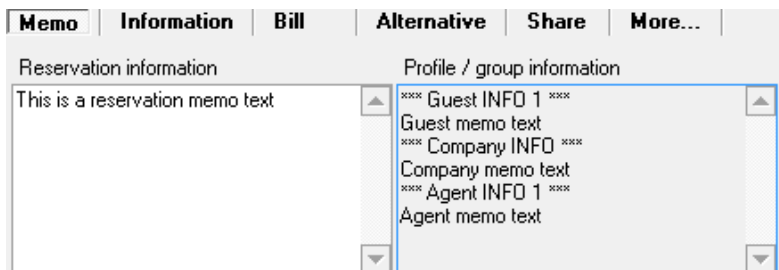
Reservation

Memo fields

The memo field section in the reservation and group reservation screens have been enhanced. Two separate memo field are now available.

- The left memo field contains reservation Information and can be edited from the reservation screen itself.
- The right memo field is read only and contains Profile and Group information.

Changes to the right memo field can only be done from the linked relation profile and/or in the linked group reservation. By moving the profile and group information to a read only field prevents the information to be overwritten or erased accidentally.



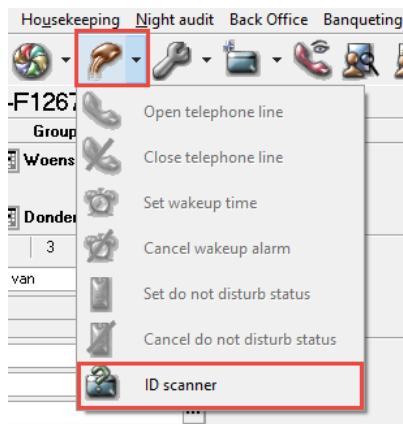
The F&B Info field has been relocated to the Information TAB.

ID scanner

A new module has been introduced for processing of scanned ID data.

The ID Reader/Scanning technology itself is not provided by Itesso but through a 3rd party specialist provider. Currently only the ID readers and software from the company IDReaders is supported. For more info visit <http://www.idreaders.nl/>

The ID scanner from IDReaders will scan the ID the moment it is presented to the reader. The scanner will process the information from the RFID chip or MRC data of the ID and store the information in the IDPMS database. IDPMS can use this ID data to create or update a guest relation profile.



In IDPMS all the available scanned ID's are displayed. From this screen the reservation profile can be updated or a new profile can be created.



The ID Scanner functionality is a licensed module and more information can be obtained via our Itesso sales team.

CCV Interface

Direct sale

The direct sales option has been added to the CCV interface. This option allows direct sales without obtaining an authorization code prior to the actual settlement. This also allows Direct Currency Conversion (DCC) transactions for direct sales.

Note that this functionality also requires an update of the payment terminals by CCV. Contact CCV to get this update.

Other changes and enhancements

- Default sub source option are now available on rate types and packages.
- Manual rates in combination with group reservation now works correctly.
- The full guest name in reservations from OTA channels without a guest profile attached are no longer deleted when the reservation is changed in IDPMS by the user without changing the guest name details.
- Rate rounding now works correctly.
- All fields that contain a time value now have extra validation on the time value that is input. It is now no longer possible to enter an incorrect time value or format.
- Various fixes and improvements have been completed for the CCV credit card interface.
- The room rate and restrictions are now evaluated for the room type that is selected in the up/down sell field instead of reservation room type field.
- Debtor invoices can now be settled without mandatory printing.
- Printing reports during the night audit is now possible with pre-set defaults via the report default value module has been fixed.
- Event reservations linked to a reservation or group reservation are now automatically cancelled when cancelling the reservation or group reservation to which they were linked. The user is prompted and asked whether the linked event reservation should be cancelled.
- When deleting an IDPMS user the IDPMS mailbox linked to this user is now deleted as well.
- The number of breakfast shown on the IDPMS Dashboard is now correctly calculated.